

PLEASE READ THE ENTIRE INSTRUCTION SHEET BEFORE STARTING INSTALLATION.

PLEASE REFER TO THE OPERATORS MANUAL FOR YOUR SPECIFIC COMBINE FOR PERTINENT SAFETY PRECAUTIONS THE TERMS. "LEFT", "RIGHT", "FRONT", & "REAR" ARE DETERMINED BY FACING IN THE DIRECTION THE COMBINE WILL TRAVEL WHEN IN USE.

IMPORTANT:

Before you begin installation, compare the contents with the enclosed "Packing Slip" to confirm that you have received the correct panels and associated hardware for your model header. Please refer to the operators manual for your specific combine for pertinent safety precautions.

Panel Layout:



Visit us online at www.lundellplastics.com to see other innovative products!



1. Remove auger covers and clean the entire length of the auger trough's to remove all dirt and crop residue.



2. Remove all patches, repairs or added bolts that would restrict the poly covers from laying flat against the top surface of the metal trough.



3. Insert lower liner (AGTCP8900L) under the auger and use shims to wedge panel down right against floor as show in the picture. Be sure the panel is centered around the bolts as shown



4. Install stainless hold down stripes (lower front pt# AGTCHD8900LF, lower rear pt# AGTCHD8900LR), using either the pop rivets or the self drilling screws. Start on one end and work your way to the other end. If using pop rivets drill 13/64 hold as shown in the image on the right, then insert rivet as shown below before moving on the next hole.

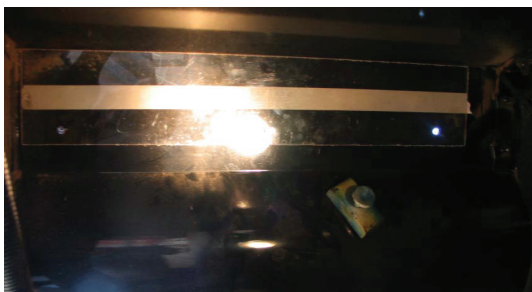
Note: Be sure the hold down strips is positioned correctly along the entire length of the part prior to and while securing. They should overlap the poly by 5/8 of an inch.

When using power tools, basic safety precautions should always followed to reduce the risk of personal injury. WEAR SAFETY GLASSES OR GOGGLES.

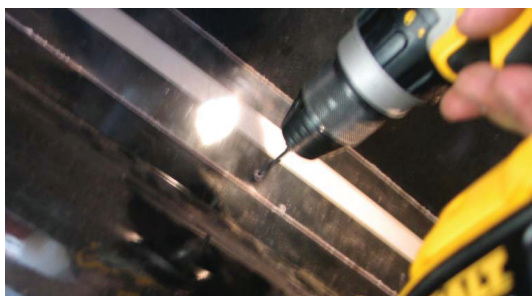
Visit us online at www.lundellplastics.com to see other innovative products!



5. Insert the Upper (rear) Liner (AGTCP8900U) under the auger and shim liner down tight against the trough floor as in step three.



6. From underneath the trough on the right side of the machine insert front template using the two-way tape to hold in place. Template should be tight to the top and toward the outside.



7. Drill the three 1/8 holds through the trough. Remove the template and re-drill the three holes using the 3/8 drill bit.

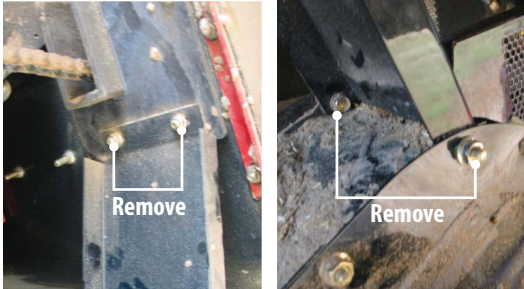


Upper Front

Upper Rear

8. Install the Upper Front (AGTCHD8900UF) Hold down Strip; start with the three 1/4 x 5/8 carriage bolts on the right end. Do not tighten at this time. Continue working from the right to the left installing the pop rivets or self drilling screws.
9. Install Upper Rear (AGTCHD8900UR) hold down strip. Begin on the left side of the trough and work toward the right until you reach the square holes. Using the square holes as a template; drill two of the holes through the trough with the 17/64 drill bit.

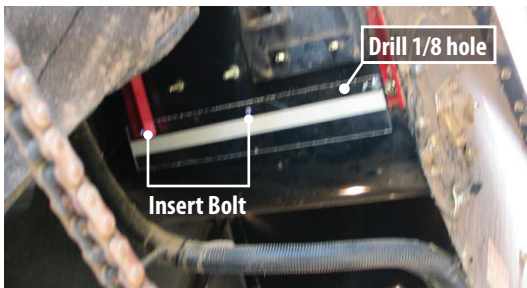
Visit us online at www.lundellplastics.com to see other innovative products!



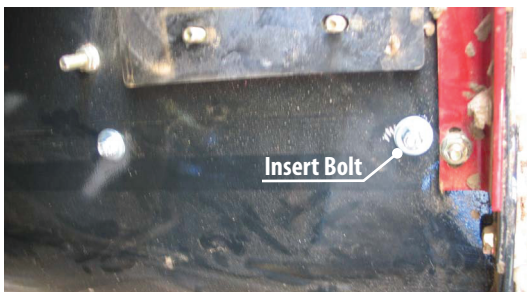
10. Remove bracket that is on the rear side of the upper trough.



11. Re-drill the two holes with the 3/8 drill from the bottom side of the trough. Be careful to not drill the hold down strip.



12. Use the two holes just drilled insert two of the 1/4 x 5/8 carriage bolts into their holes; use these bolts to locate the front drill template in the proper position. Install the drill template using the two-way tape, drill 1/8 hole on the right end. Remove the drill template re-drill the hole with the 3/8 drill bit.



13. To complete the installation, insert the last 1/4 x 5/8 carriage bolt and flange nut. Tighten all six nuts on the carriage bolts. Re-install the bracket that was removed in Step 10. Re-install the auger covers.

WARNING Proper application, installation, and operation of any machine and/or installation incorporating products sold by Lundell Plastics Corporation™ is the responsibility of the purchaser and/or end user. All local, state, and federal safety codes must be followed. Lundell Plastics Corporation™ is specifically not responsible for property damage and/or personal injury, direct or indirect, for damages and/or failures caused by improper design, application, installation, operation, abuse, and/or misuse of its' products. Conveyors must never be installed, readied for operation, or operated without proper covers and guards installed and securely in place.

Visit us online at www.lundellplastics.com to see other innovative products!